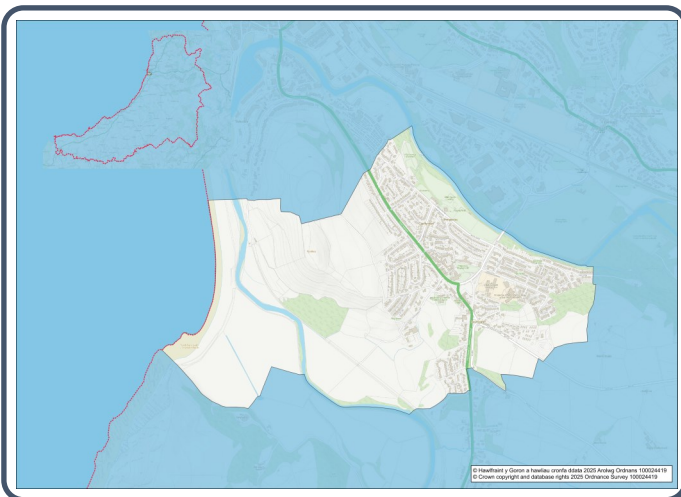


# 2021 Census Area Profiles – Electoral Wards

## W05001301 - Aberystwyth Penparcau



### Population:



**2,963 residents**



**Females**  
1,561



**Males**  
1,402

**Population Change**  
(2011-2021)

**-5.1%**

**166 Students**

(people over 16 who are engaged in full-time courses of study in secondary, tertiary or higher education institutions)

**22.2% aged 0 - 15**

**61.4% aged 16 - 64**

**16.5% aged 65+**

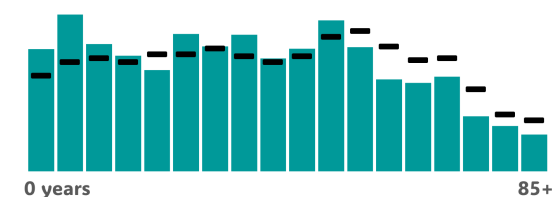
**4.9% BAME**

**94.8% White**

**0.4% Other Ethnic Group**

**Age Profile**

■ Aberystwyth Penparcau ■ Wales



### Health & Disability:



**21.5%**

**Disabled under the Equality Act**



**10.2%**

**Day-to-day activities limited a lot**



**79.2%**

**In good or very good health**



**10.2%**

**Provides unpaid care**

### Households:



**1,281**

**Households**



**1.5%**

**Households without central heating**



**55.5%**

**Households deprived in one or more deprivation dimensions**



**2.2% Overcrowded Households**

### Welsh Language:



**32.3%**

**Can speak Welsh**

**Age breakdown of Welsh speakers**

**0-15: 7.1%**

**16-64: 17.9%**

**65+: 6.2%**



**49.6%**

**Have NO skills in Welsh**

### Economy:



**57.6%**

**Employment Rate**



**15.8%**

**Achieving level 2 qualification**



**39.7%**

**Economic Inactivity**



**17.5%**

**No Qualifications**

## Demography, Ethnicity, Identity & Religion:

	Ward		Ceredigion
	No.	%	%
<b>Population</b>			
Population 2021	2,963	-	71,475
Population 2011	3,122	-	75,922
Population change (2011-21)	-159	-5.1%	- 5.8%
Population density	1,558.5	-	40.0
<b>Sex</b>			
Males	1,402	47.3%	48.9%
Females	1,561	52.7%	51.1%
<b>Age</b>			
Aged 0 to 4	186	6.3%	3.8%
Aged 5 to 19	612	20.6%	16.1%
Aged 20 to 34	554	18.7%	18.9%
Aged 35 to 49	567	19.1%	14.2%
Aged 50 to 64	559	18.8%	21.3%
Aged 65 to 74	279	9.4%	13.9%
Aged 75 and over	209	7.0%	11.8%
<b>Country of birth</b>			
Born in UK	2,761	93.3%	92.9%
Born outside of UK	199	6.7%	7.1%
<b>National Identity</b>			
One or more UK identity	2,746	92.6%	93.4%
UK identity and non-UK identity	76	2.6%	1.7%
Non-UK identity	144	4.9%	4.9%
<b>Religion</b>			
Christian	1,174	39.6%	46.7%
No religion	1,518	51.2%	43.0%
All Other Religions	80	2.7%	2.6%
<b>Veterans</b>			
Previously served in UK armed forces	100	4.3%	4.1%

## Housing & Household Composition:

	Ward		Ceredigion
	No	%	%
<b>Tenure</b>			
Owned	640	50.0%	68.6%
Private rented	217	17.0%	20.6%
Social rented	422	33.0%	10.5%
Shared ownership	1	0.1%	0.3%
Lives rent free	0	0.0%	0.0%
<b>Accommodation Type</b>			
Detached	106	8.3%	50.7%
Semi detached	557	43.5%	23.1%
Terraced	417	32.6%	14.1%
Flat, maisonette or apartment	186	14.5%	11.3%
Caravan or other mobile temporary	15	1.2%	0.8%
<b>Household composition</b>			
One person household	398	31.1%	33.0%
Single family household	842	65.7%	60.4%
Other household types	41	3.2%	6.6%
<b>Central Heating</b>			
No central heating	19	1.5%	2.6%
<b>Occupancy Rating</b>			
Overcrowded households	28	2.2%	1.4%
<b>Number of bedrooms</b>			
1 bedroom	61	4.8%	7.4%
2 bedrooms	422	32.9%	23.6%
3 bedrooms	666	52.0%	42.5%
4+ bedrooms	133	10.4%	26.5%
<b>Number of cars or vans</b>			
No car or van	314	24.5%	15.7%
<b>Deprivation</b>			
Households deprived in one or more deprivation dimensions	711	55.5%	52.9%

## Labour Market & Education:

	Ward		Ceredigion
	No	%	%
<b>Economic activity status</b>			
Economically active (in employment)	1,292	55.9%	46.8%
Economically active (unemployed)	52	2.2%	1.8%
Economically inactive	919	39.7%	47.9%
Retired	448	19.4%	27.7%
Student	122	5.3%	10.0%
Looking after home or family	109	4.7%	3.5%
Long-term sick or disabled	167	7.2%	4.4%
<b>Top 3 Industries</b>			
Public administration, education and health	554	18.7%	14.8%
Distribution, hotels and restaurants	373	12.6%	9.2%
Construction	123	4.2%	3.6%
<b>Education</b>			
No Qualifications (all aged 16+)	404	17.5%	14.7%
Qualifications Level 2	365	15.8%	13.7%
Apprenticeship	154	6.7%	5.4%
<b>Travel to Work</b>			
Work mainly at/from home	258	19.4%	31.6%
Driving car/van	671	50.4%	51.1%
Bus	20	1.5%	1.3%
On foot	218	16.4%	10.0%