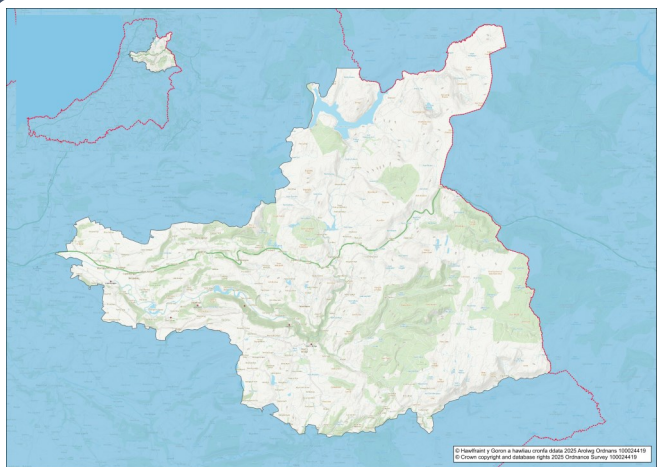


2021 Census Area Profiles – Electoral Wards

W05001323– Melindwr



Population:


2,011 residents


Females
1,023


Males
988

Population Change
(2011-2021)
-0.4%

86
Students

(people over 16 who are engaged in full-time courses of study in secondary, tertiary or higher education institutions)

17.3% aged 0 - 15

57.5% aged 16 – 64

25.2% aged 65+

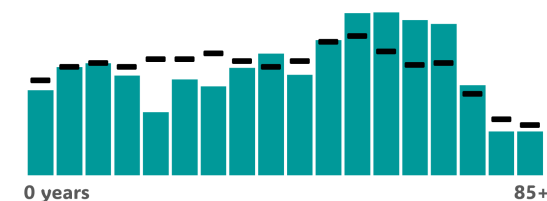
1.2% BAME

98.6% White

0.2% Other Ethnic Group

Age Profile

■ Melindwr ■ Wales



Health & Disability:



17.9%

Disabled under the Equality Act



6.5%

Day-to-day activities limited a lot



83.1%

In good or very good health



10.6%

Provides unpaid care

Households:



875

Households



3.7%

Households without central heating



47.8%

Households deprived in one or more deprivation dimensions



1.5% Overcrowded Households

Welsh Language:



49.2%

Can speak Welsh

Age breakdown of Welsh speakers

0-15: 11.4%

16-64: 27.0%

65+: 9.5%



40.0%

Have NO skills in Welsh

Economy:



57.8%

Employment Rate



13.7%

Achieving level 2 qualification



40.0%

Economic Inactivity



13.4%

No Qualifications

Demography, Ethnicity, Identity & Religion:

	Ward		Ceredigion
	No.	%	%
Population			
Population 2021	2,011	-	71,475
Population 2011	2,020	-	75,922
Population change (2011-21)	-9	-0.4%	- 5.8%
Population density	10.2	-	40.0
Sex			
Males	1,023	50.9%	48.9%
Females	988	49.1%	51.1%
Age			
Aged 0 to 4	89	4.4%	3.8%
Aged 5 to 19	334	16.6%	16.1%
Aged 20 to 34	259	12.9%	18.9%
Aged 35 to 49	342	17.0%	14.2%
Aged 50 to 64	480	23.9%	21.3%
Aged 65 to 74	320	15.9%	13.9%
Aged 75 and over	187	9.3%	11.8%
Country of birth			
Born in UK	1,938	96.3%	92.9%
Born outside of UK	75	3.7%	7.1%
National Identity			
One or more UK identity	1,925	95.7%	93.4%
UK identity and non-UK identity	34	1.7%	1.7%
Non-UK identity	52	2.6%	4.9%
Religion			
Christian	958	47.7%	46.7%
No religion	877	43.6%	43.0%
All Other Religions	27	1.3%	2.6%
Veterans			
Previously served in UK armed forces	56	3.4%	4.1%

Housing & Household Composition:

	Ward		Ceredigion
	No	%	%
Tenure			
Owned	666	76.4%	68.6%
Private rented	148	17.0%	20.6%
Social rented	57	6.5%	10.5%
Shared ownership	1	0.1%	0.3%
Lives rent free	0	0.0%	0.0%
Accommodation Type			
Detached	605	69.2%	50.7%
Semi detached	171	19.6%	23.1%
Terraced	65	7.4%	14.1%
Flat, maisonette or apartment	28	3.2%	11.3%
Caravan or other mobile temporary	5	0.6%	0.8%
Household composition			
One person household	234	26.8%	33.0%
Single family household	596	68.2%	60.4%
Other household types	44	5.0%	6.6%
Central Heating			
No central heating	32	3.7%	2.6%
Occupancy Rating			
Overcrowded households	13	1.5%	1.4%
Number of bedrooms			
1 bedroom	28	3.2%	7.4%
2 bedrooms	207	23.6%	23.6%
3 bedrooms	379	43.3%	42.5%
4+ bedrooms	262	29.9%	26.5%
Number of cars or vans			
No car or van	70	8.0%	15.7%
Deprivation			
Households deprived in one or more deprivation dimensions	418	47.8%	52.9%

Labour Market & Education:

	Ward		Ceredigion
	No	%	%
Economic activity status			
Economically active (in employment)	940	56.5%	46.8%
Economically active (unemployed)	33	2.0%	1.8%
Economically inactive	666	40.0%	47.9%
<i>Retired</i>	456	27.4%	27.7%
<i>Student</i>	64	3.8%	10.0%
<i>Looking after home or family</i>	51	3.1%	3.5%
<i>Long-term sick or disabled</i>	58	3.5%	4.4%
Top 3 Industries			
Public administration, education and health	356	17.7%	14.8%
Distribution, hotels and restaurants	147	7.3%	9.2%
Agriculture, energy and water	137	6.8%	3.8%
Education			
No Qualifications (all aged 16+)	223	13.4%	14.7%
Qualifications Level 2	228	13.7%	13.7%
Apprenticeship	84	5.1%	5.4%
Travel to Work			
Work mainly at/from home	355	37.0%	31.6%
Driving car/van	515	53.6%	51.1%
Bus	9	0.9%	1.3%
On foot	22	2.3%	10.0%