

Welcome



This is our seventh newsletter for the Aberaeron Coastal Defence Scheme which aims to provide an overview of the upcoming works.

If you would like to view our newsletters please scan:

English:

Welsh:



Aberaeron Harbour - Andrew Chittock

BAM is working in partnership with Ceredigion County Council and AtkinsRéalis Design Consultancy to deliver Aberaeron Coastal Defence Scheme.

Project Manager's update

I am pleased to report that the Aberaeron Coastal Defence project is now in its final stage after 19 months of construction and improvements designed to protect the town from coastal flooding.

Finishing touches, including re instating the coastal path, landscaping and completing Pwll Cam terrace, with completion expected in the coming weeks.

I would like to take this opportunity to sincerely thank the residents and businesses for their continued patience and support throughout the duration of the project.

Andrew Pointon-Bell, BAM



What have we been doing?

- » Completed the North Breakwater and concrete walkway
- » Completed South Pierhead concrete structure
- » Completed South Beach rock revetment, beach replenishment and remove haul route access
- » Completed the River Aeron wall and glass panels in front of Toad Hall & Y-Seler
- » Building of the new walls and flood gate installation at the wooden bridge adjacent the Y-Seler
- » Building of the stepped terrace area to the Pwll Cam inner harbour including a ramp access
- » Installed and commissioned the new inner harbour gate
- » Completed the inner harbour gate walls masonry finish
- » Completed Quay Parade quayside promenade concrete footpath and commission the four new flood gates.



Outstanding works to be completed in August

- » Complete masonry remedial works to South Pier
- » Complete general tidying of the South Beach, clearance of working areas, and preparation works for reopening the South Coastal Footpath.
- » Complete sealant application to the North Breakwater and Quay Parade, fit flap valves, complete asphalt surfacing, clearance of working areas, and preparation for opening of these areas
- » Complete the hard landscaping to Pwll Cam Terrace area, which will be followed by an asphalt and textured surfacing
- » Installation of lighting columns and pavement lighting to the Pwll Cam Terrace area
- » Removal and reinstatement of the contractor's office compound.



Traffic and pedestrian management

As our flood defence project nears completion, some pedestrian management measures must remain in place until completion and the project is officially handed back to Ceredigion County Council. This includes:

- » The coastal path diversion through Aberaeron.
- » Access onto South Beach.
- » The pedestrian wooden footbridge across the river Aeron.



Community Benefits and Engagement

BAM Clear South Beach Ahead of Reopening

Members of the team spent time removing shards and rubbish from South Beach to help ensure it's safe and clean before reopening.



BAM Steps in to fill Potholes along Aberaeron Parkrun Route to Llanerchaeron

An Aberaeron Secondary School pupil reached out to BAM to help fill the potholes along the Llanerchaeron Park Run route. BAM responded by sending a team to repair the affected sections at either end of the route.



Aberaeron Women's Institute

Aberaeron WI invited BAM's Public Liaison Officer to their meeting in June to provide an update on the Aberaeron Coastal Defence project.



Llanon Primary School



Pupils from Llanon Primary School recently visited Aberaeron Harbour to learn about the Coastal Defence project. As part of the school visit, the children were invited to design a construction safety poster. The challenge encouraged the pupils to highlight the dangers found in and around construction sites. The winners received an art set provided by BAM.



Community Benefits and Engagement



BAM STEM Ambassadors

BAM Stem Ambassadors continue to meet with local students to provide valuable insight into Civil Engineering and to learn about the Aberaeron Coastal Defence project.

During a site visit, the ambassadors explained how the new sea defences are engineered to protect the coastline from flooding. They showed how features like rock armour, sea walls, and wave-dissipating structures work together to safeguard the town.

Since our last newsletter we have engaged with:

- » Bro Pedr Secondary School
- » Llanon Primary School
- » Aberaeron Secondary School.



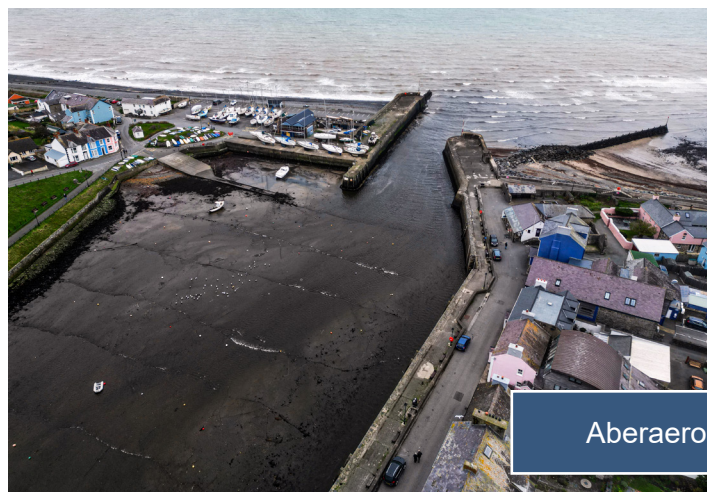
“ Thank you very much for organising the visit for the Geography Department last Thursday. A special thanks to Tony Piddock for providing a presentation about the coastal defence scheme and for taking us on a tour around the harbour. The feedback from the pupils was extremely positive as they felt that they had learnt so much about the scheme. ”

Head of Geography,
Aberaeron Comprehensive School

Construction gallery



Aberaeron coastal defence before and after images:



Aberaeron Harbour

Photography Andrew Chittock



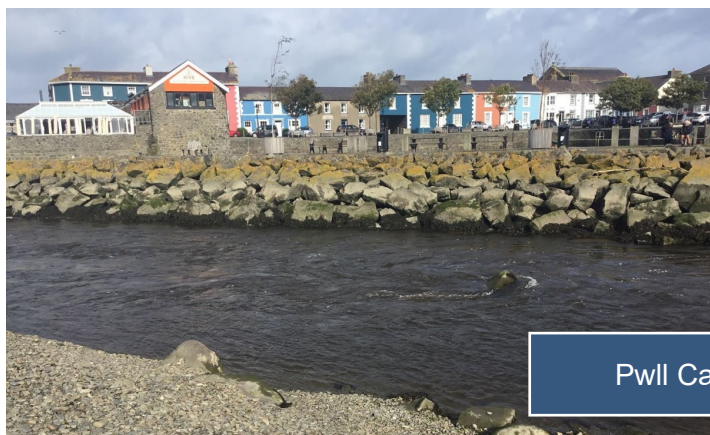
Photography Andrew Chittock



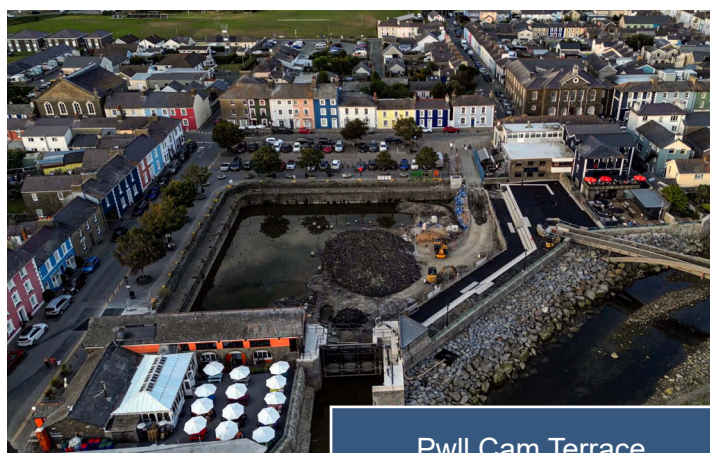
South Beach



Construction gallery



Pwll Cam Terrace



Pwll Cam Terrace

Lluniau Andrew Chittock



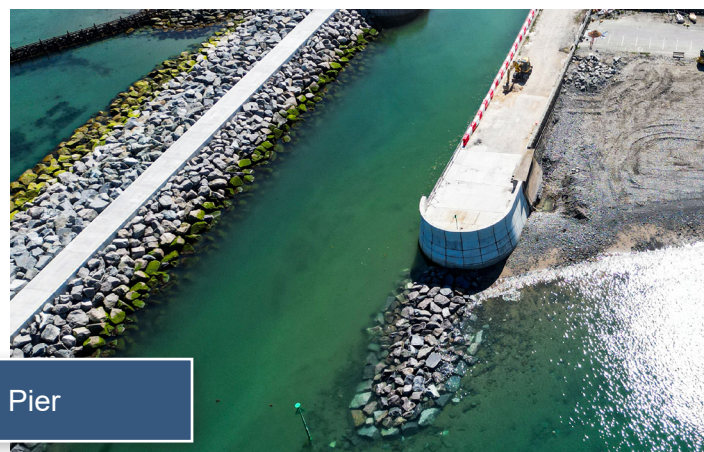
Pwll Cam Harbour



River Aeron



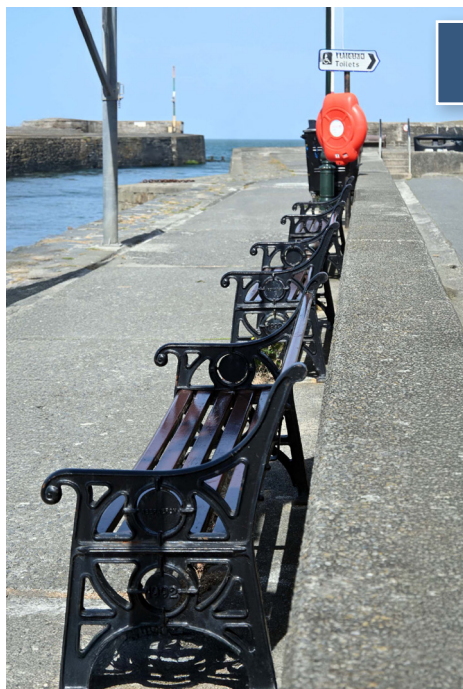
South Pier



Construction gallery



Pwll Cam Entrance



Photography Andrew Chittock



Photography Andrew Chittock



Photography Andrew Chittock



OUR TEAM



Contracts Manager

Ray Jones

Project Manager

Andrew Pointon-Bell

Quantity Surveyor

Abby Davies

Works Manager

Keith Hughes

General Foreman

Damion Hopkins

Site Agent

Emyr Thomas

Public Liaison Officer

Gwen Clements

Environmental Advisor

John Clancy

OUR PARTNERS

Ceredigion County

Council:

Project Manager

Alan Haird

AtkinsRéalis Design

Consultancy:

Project Manager

Steffan Davies

Design Manager

Matthew Tierney

We are BAM



We imagine, create and enrich buildings and infrastructure across the UK & Ireland. For over 150 years, we've dedicated ourselves to enhancing lives by creating sustainable environments and communities where people can live, work and thrive.

Our vision is to build a sustainable tomorrow. That's why we think beyond the build and focus on the bigger impact. It's how we make the iconic buildings and infrastructure that shape our society.

Restless in our pursuit of better, we work collaboratively with our partners to unlock what's possible, together. That's because we believe in actions, not words.

And that's why we're on a mission to make possible.

Environment and community



Through the adoption of a responsible and proactive attitude to environmental issues BAM is committed to minimising any potentially harmful effects of its business activities on the environment and contributing to sustainable development through balancing its business aims with environmental considerations. BAM will comply with, and where possible, exceed legal and other requirements to which it subscribes, in relation to its environmental aspects and engaging communities in the project.

Considerate Constructors



All BAM sites register with the Considerate Constructors Scheme. This means we are committed to being a good neighbour and to being clean, respectful, safe, environmentally conscious, responsible, and accountable. Our site is independently inspected to make sure we live up to these aims.

We try to work in a way that causes as little inconvenience as possible to our neighbours. We apologise for any unavoidable nuisance that may be caused during the work.

Contact Us

It is our intention to complete these works with minimal disruption. However, if you have any concerns, please contact our Public Liaison Officer who is available to assist.

Gwen Clements:



07585 633799



Aberaeron.plo@bam.com

You can sign up for email updates by emailing aberaeron.plo@bam.com and confirming that you would like to receive updates and a copy of future Newsletters.

For more information about BAM:

Scan
here

