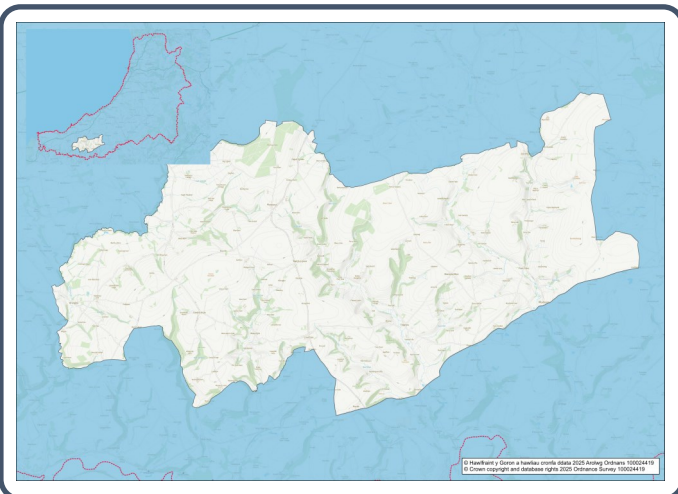


2021 Census Area Profiles – Electoral Wards

W05001313 - Llandysul North & Troedryaur



Population:



2,113 residents



Females
1,083



Males
1,030

Population Change (2011-2021)

N/A

(the boundary of this Ward has changed since 2011)

86

Students

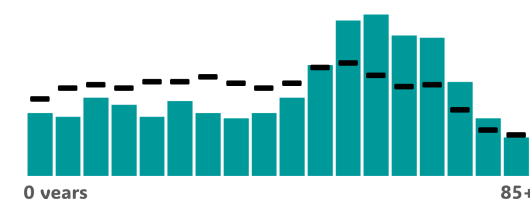
(people over 16 who are engaged in full-time courses of study in secondary, tertiary or higher education institutions)

13.7% aged 0 - 15
56.3% aged 15- 64
30.0% aged 65+

1.4% BAME
98.5% White
0.1% Other Ethnic Group

Age Profile

■ Llandysul North & Troedryaur



Health & Disability:



22.2%

Disabled under the Equality Act



9.8%

Day-to-day activities limited a lot



77.1%

In good or very good health



11.1%

Provides unpaid care

Households:



928

Households



3.4%

Households without central heating



55.1%

Households deprived in one or more deprivation dimensions



1.4% Overcrowded Households

Welsh Language:



49.9%

Can speak Welsh

Age breakdown of Welsh speakers

0-15: 8.9%

16-64: 28.9%

65+: 10.9%



42.0%

Have NO skills in Welsh

Economy:



49.5%

Employment Rate



15.6%

Achieving level 2 qualification



48.1%

Economic Inactivity



19.5%

No Qualifications

Demography, Ethnicity, Identity & Religion:

	Ward		Ceredigion
	No.	%	%
Population			
Population 2021	2,113	-	71,475
Population 2011	-	-	75,922
Population change (2011-21)	-	-	- 5.8%
Population density	29.8	-	40.0
Sex			
Males	1,030	48.7%	48.9%
Females	1,083	51.3%	51.1%
Age			
Aged 0 to 4	85	4.0%	3.8%
Aged 5 to 19	282	13.3%	16.1%
Aged 20 to 34	264	12.5%	18.9%
Aged 35 to 49	268	12.7%	14.2%
Aged 50 to 64	580	27.4%	21.3%
Aged 65 to 74	377	17.8%	13.9%
Aged 75 and over	257	12.2%	11.8%
Country of birth			
Born in UK	2,037	96.4%	92.9%
Born outside of UK	77	3.6%	7.1%
National Identity			
One or more UK identity	2,055	97.2%	93.4%
UK identity and non-UK identity	22	1.0%	1.7%
Non-UK identity	37	1.8%	4.9%
Religion			
Christian	1,069	50.6%	46.7%
No religion	872	39.1%	43.0%
All Other Religions	34	1.6%	2.6%
Veterans			
Previously served in UK armed forces	69	3.8%	4.1%

Housing & Household Composition:

	Ward		Ceredigion
	No.	%	%
Tenure			
Owned	758	81.7%	68.6%
Private rented	100	10.8%	20.6%
Social rented	70	7.5%	10.5%
Shared ownership	0	0.0%	0.3%
Lives rent free	0	0.0%	0.0%
Accommodation Type			
Detached	706	75.9%	50.7%
Semi detached	177	19.0%	23.1%
Terraced	30	3.2%	14.1%
Flat, maisonette or apartment	11	1.2%	11.3%
Caravan or other mobile temporary	6	0.6%	0.8%
Household composition			
One person household	264	28.4%	33.0%
Single family household	606	65.3%	60.4%
Other household types	58	6.2%	6.6%
Central Heating			
No central heating	32	3.4%	2.6%
Occupancy Rating			
Overcrowded households	13	1.4%	1.4%
Number of bedrooms			
1 bedroom	26	2.8%	7.4%
2 bedrooms	200	21.6%	23.6%
3 bedrooms	415	44.7%	42.5%
4+ bedrooms	287	30.9%	26.5%
Number of cars or vans			
No car or van	49	5.3%	15.7%
Deprivation			
Households deprived in one or more deprivation dimensions	511	55.1%	52.9%

Labour Market & Education:

	Ward		Ceredigion
	No.	%	%
Economic activity status			
Economically active (in employment)	877	48.1%	46.8%
Economically active (unemployed)	40	2.2%	1.8%
Economically inactive	877	48.1%	47.9%
<i>Retired</i>	608	33.3%	27.7%
<i>Student</i>	57	3.1%	10.0%
<i>Looking after home or family</i>	72	3.9%	3.5%
<i>Long-term sick or disabled</i>	74	4.1%	4.4%
Top 3 Industries			
Public administration, education and health	264	12.5%	14.8%
Agriculture, energy and water	148	7.0%	3.8%
Distribution, hotels and restaurants	147	7.0%	9.2%
Education			
No Qualifications (all aged 16+)	356	19.5%	14.7%
Qualifications Level 2	284	15.6%	13.7%
Apprenticeship	126	6.9%	5.4%
Travel to Work			
Work mainly at/from home	323	35.8%	31.6%
Driving car/van	516	57.2%	51.1%
Bus	2	0.2%	1.3%
On foot	17	1.9%	10.0%