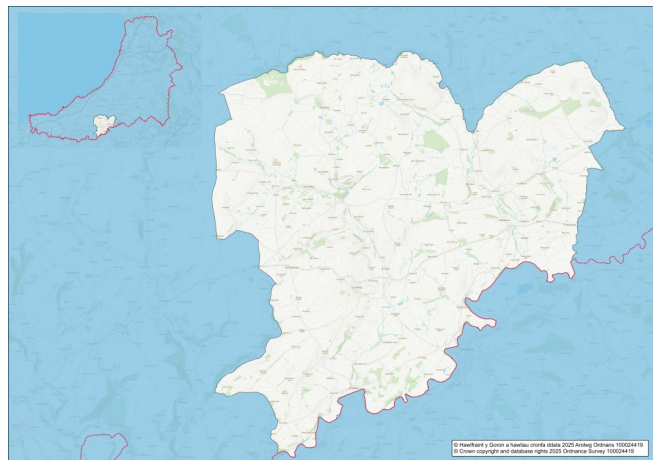


2021 Census Area Profiles – Electoral Wards

W05001321 - Llanwenog



Population:


1,742 residents


Females
925


Males
817

Population Change
(2011-2021)
-6.0%

74
Students

(people over 16 who are engaged in full-time courses of study in secondary, tertiary or higher education institutions)

15.1% aged 0 - 15

55.2% aged 16 - 64

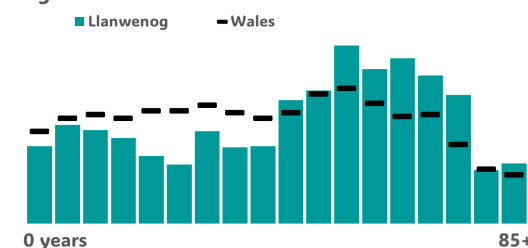
29.7% aged 65+

1.4% BAME

98.2% White

0.5% Other Ethnic Group

Age Profile



Health & Disability:



21.8%

Disabled under the Equality Act



11.0%

Day-to-day activities limited a lot



77.4%

In good or very good health



11.1%

Provides unpaid care

Households:



756

Households



4.0%

Households without central heating



53.2%

Households deprived in one or more deprivation dimensions



1.5% Overcrowded Households

Welsh Language:



52.7%

Can speak Welsh

Age breakdown of Welsh speakers

0-15: 9.8%

16-64: 29.8%

65+: 11.7%



37.7%

Have NO skills in Welsh

Economy:



52.8%

Employment Rate



45.3%

Economic Inactivity



16.6%

Achieving level 2 qualification



17.9%

No Qualifications

Demography, Ethnicity, Identity & Religion:

	Ward		Ceredigion
	No.	%	%
Population			
Population 2021	1,742	-	71,475
Population 2011	1,854	-	75,922
Population change (2011-21)	-112	-6.0%	- 5.8%
Population density	25.4	-	40.0
Sex			
Males	817	46.9%	48.9%
Females	925	53.1%	51.1%
Age			
Aged 0 to 4	72	4.1%	3.8%
Aged 5 to 19	259	14.9%	16.1%
Aged 20 to 34	204	11.7%	18.9%
Aged 35 to 49	257	14.7%	14.2%
Aged 50 to 64	434	24.9%	21.3%
Aged 65 to 74	291	16.7%	13.9%
Aged 75 and over	226	13.0%	11.8%
Country of birth			
Born in UK	1,666	95.6%	92.9%
Born outside of UK	76	4.4%	7.1%
National Identity			
One or more UK identity	1,670	95.9%	93.4%
UK identity and non-UK identity	19	1.1%	1.7%
Non-UK identity	53	3.0%	4.9%
Religion			
Christian	950	54.5%	46.7%
No religion	610	35.0%	43.0%
All Other Religions	21	1.2%	2.6%
Veterans			
Previously served in UK armed forces	62	4.2%	4.1%

Housing & Household Composition:

	Ward		Ceredigion
	No	%	%
Tenure			
Owned	608	80.4%	68.6%
Private rented	112	14.8%	20.6%
Social rented	36	4.8%	10.5%
Shared ownership	0	0.0%	0.3%
Lives rent free	0	0.0%	0.0%
Accommodation Type			
Detached	510	67.4%	50.7%
Semi detached	197	26.0%	23.1%
Terraced	30	4.0%	14.1%
Flat, maisonette or apartment	16	2.1%	11.3%
Caravan or other mobile temporary	4	0.5%	0.8%
Household composition			
One person household	220	29.1%	33.0%
Single family household	498	65.8%	60.4%
Other household types	39	5.2%	6.6%
Central Heating			
No central heating	30	4.0%	2.6%
Occupancy Rating			
Overcrowded households	11	1.5%	1.4%
Number of bedrooms			
1 bedroom	22	2.9%	7.4%
2 bedrooms	168	22.2%	23.6%
3 bedrooms	358	47.3%	42.5%
4+ bedrooms	209	27.6%	26.5%
Number of cars or vans			
No car or van	42	5.6%	15.7%
Deprivation			
Households deprived in one or more deprivation dimensions	403	53.2%	52.9%

Labour Market & Education:

	Ward		Ceredigion
	No	%	%
Economic activity status			
Economically active (in employment)	763	51.6%	46.8%
Economically active (unemployed)	26	1.8%	1.8%
Economically inactive	669	45.3%	47.9%
<i>Retired</i>	466	31.5%	27.7%
<i>Student</i>	56	3.8%	10.0%
<i>Looking after home or family</i>	53	3.6%	3.5%
<i>Long-term sick or disabled</i>	73	4.9%	4.4%
Top 3 Industries			
Public administration, education and health	240	13.8%	14.8%
Agriculture, energy and water	135	7.8%	3.8%
Distribution, hotels and restaurants	129	7.4%	9.2%
Education			
No Qualifications (all aged 16+)	264	17.9%	14.7%
Qualifications Level 2	245	16.6%	13.7%
Apprenticeship	88	6.0%	5.4%
Travel to Work			
Work mainly at/from home	243	31.2%	31.6%
Driving car/van	471	60.5%	51.1%
Bus	3	0.4%	1.3%
On foot	30	3.9%	10.0%