



Cyngor Sir
CEREDIGION
County Council

Rhodri Llwyd
Swyddog Arweiniol Corfforaethol : Prifffyrdd a Gwasanaethau Amgylcheddol
Corporate Lead Officer : Highways and Environmental Services

Canolfan Rheidol, Rhodfa Padarn,
Llanbadarn Fawr, Aberystwyth. SY23 3UE

CYNGOR SIR CEREDIGION.
CEREDIGION COUNTY COUNCIL.

CYMRU – BAE CEREDIGION – CEI NEWYDD
WALES - CARDIGAN BAY – NEW QUAY

HYSBYSIAD LLEOL I FORWYR.
LOCAL NOTICE TO MARINERS.

CN RHIF. 04.26.
NQ NO. 04.26.

HARBWR CEI NEWYDD.
NEW QUAY HARBOUR.

Dyddiad Date	08/07/2026
Gofynnwch am Please ask for	Owen Morgan
Llinell uniongyrchol Direct line	01545 570881
Ebost Email	clic@ceredigion.gov.uk

Ras Gychod Ceiliog Ceinewydd

Cynghorir morwyr fod Ras Gychod Ceiliog Ceinewydd wedi'i threfnu i ddigwydd ar y dyddiadau canlynol, yn amodol ar amodau'r tywydd a'r môr:

17, 18 a 19 Gorffennaf 2026.

Bydd y digwyddiad yn cynnwys rasio cychod hwylio criwser yn nyfroedd Bae Ceinewydd a'r ardal o amgylch Bae Ceredigion.

Gall gweithgareddau rasio effeithio ar ddynesiadau Harbwr Ceinewydd, Bae Ceinewydd a'r dyfroedd arfordirol cyfagos. Gofynnir i forwyr a defnyddwyr harbwr hwylio'n ofalus, cadw draw o'r cychod sy'n rasio lle bo hynny'n ymarferol, ac i gydymffurfio â [MSN 1781 \(M+F\)](#) bob amser.

Bydd cwrs y ras yn cael ei nodi dros dro â bwiau rasio a osodir gan drefnwyr y digwyddiad. Gall cynllun y cwrs a lleoliad y bwiau amrywio o ddydd i ddydd yn dibynnu ar amodau'r tywydd a'r môr. Bydd y bwiau'n cael eu symud ymaith yn fuan ar ôl i'r rasio ddod i ben.

Mae diagram o'r cyrsiau rasio arfaethedig wedi'i ddarparu isod gan drefnydd y digwyddiad.

I gael rhagor o wybodaeth am amserau'r digwyddiad ac i gysylltu â threfnydd y digwyddiad, ewch i:

[Home - New Quay Yacht Club](#)

Rydym yn croesawu gohebiaeth yn Gymraeg a Saesneg. Cewch ateb Cymraeg i bob gohebiaeth Gymraeg ac ateb Saesneg i bob gohebiaeth Saesneg. Ni fydd gohebu yn Gymraeg yn arwain at oedi.

We welcome correspondence in Welsh and English. Correspondence received in Welsh will be answered in Welsh and correspondence in English will be answered in English. Corresponding in Welsh will not involve any delay.

Prif Weithredwr / Chief Executive :
Cyfarwyddwyr Corfforaethol / Corporate Directors :

Eifion Evans
Barry Rees
James Starbuck



Cyngor Sir
CEREDIGION
County Council

Rhodri Llwyd
Swyddog Arweiniol Corfforaethol : Priffyrdd a Gwasanaethau Amgylcheddol
Corporate Lead Officer : Highways and Environmental Services

Canolfan Rheidol, Rhodfa Padarn,
Llanbadarn Fawr, Aberystwyth. SY23 3UE

New Quay Keelboat Regatta

Mariners are advised that the New Quay Keelboat Regatta is scheduled to take place on the following dates, subject to weather and sea conditions:

17th, 18th and 19th July 2026.

The event will feature cruiser yacht racing within the waters of New Quay Bay and the surrounding area of Cardigan Bay.

Racing activity may affect areas within New Quay Harbour approaches, New Quay Bay and the surrounding coastal waters. Mariners and harbour users are requested to navigate with caution, keep clear of racing yachts where practicable, and comply with the requirements of [MSN 1781 \(M+F\)](#) at all times.

The racecourse will be marked with temporary racing buoys laid by the event organisers. The course configuration and location of the marks may vary each day depending on the prevailing weather and sea conditions. All marks will be removed promptly following the conclusion of racing.

A diagram of the proposed racecourses is provided below by the event organiser.

For further information on event timings, please contact the event organiser or refer to the published regatta information.

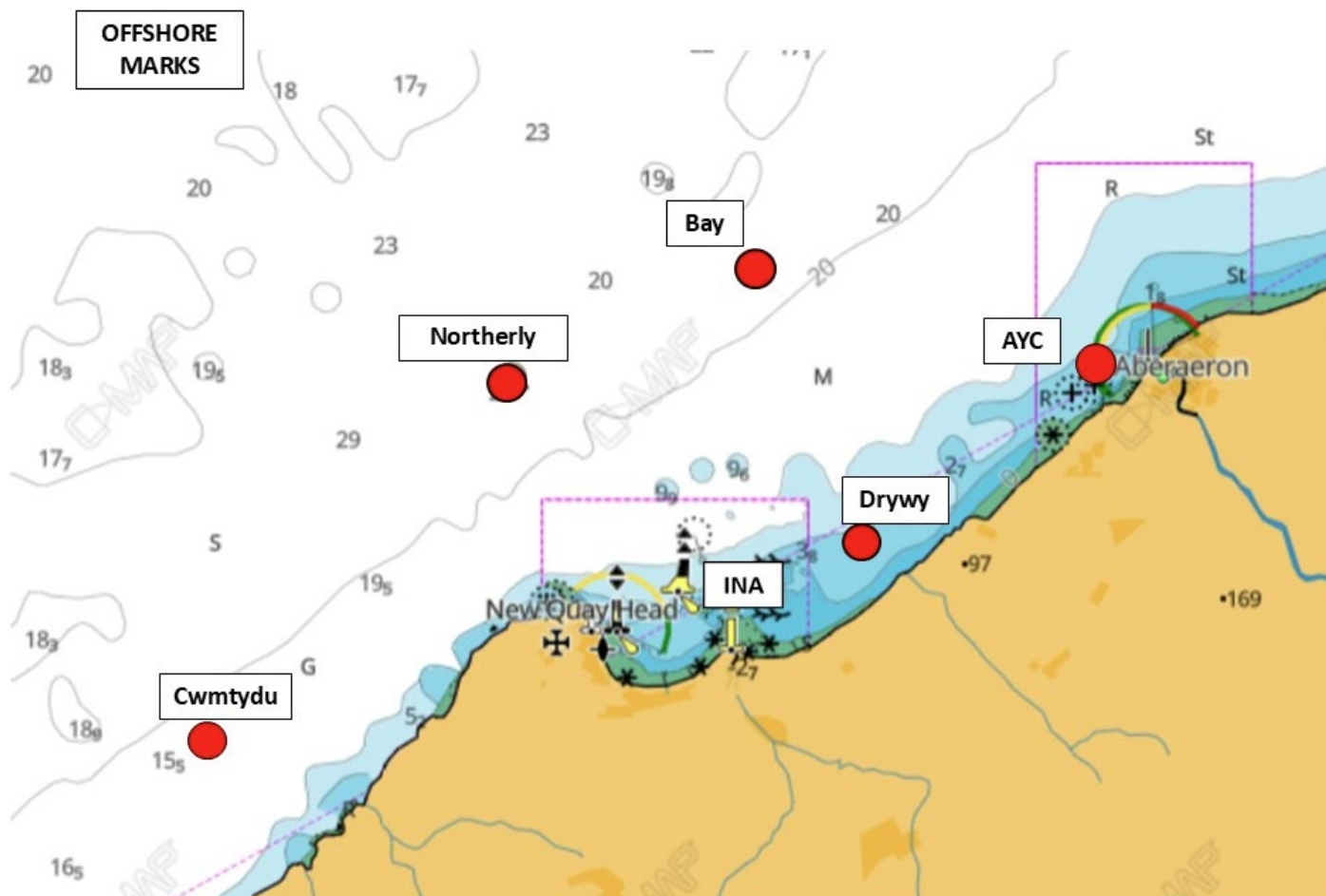
[Home - New Quay Yacht Club](#)

Rydym yn croesawu gohebiaeth yn Gymraeg a Saesneg. Cewch ateb Cymraeg i bob gohebiaeth Gymraeg ac ateb Saesneg i bob gohebiaeth Saesneg. Ni fydd gohebu yn Gymraeg yn arwain at oedi.

We welcome correspondence in Welsh and English. Correspondence received in Welsh will be answered in Welsh and correspondence in English will be answered in English. Corresponding in Welsh will not involve any delay.

Prif Weithredwr / Chief Executive :
Cyfarwyddwyr Corfforaethol / Corporate Directors :

Eifion Evans
Barry Rees
James Starbuck



Rydym yn croesawu gohebiaeth yn Gymraeg a Saesneg. Cewch ateb Cymraeg i bob gohebiaeth Gymraeg ac ateb Saesneg i bob gohebiaeth Saesneg. Ni fydd gohebu yn Gymraeg yn arwain at oedi.

We welcome correspondence in Welsh and English. Correspondence received in Welsh will be answered in Welsh and correspondence in English will be answered in English. Corresponding in Welsh will not involve any delay.



NQYC RACE MARKS AND COURSES GUIDE 2026v1 (Approximate Measured Positions as at 24/6/26)				
INSHORE				
Mark Name	Type	Lat	Long	Notes
1 (Pier Outer Dist)	Pink Spherical Buoy with flag	N52 12.996	W004 21.199	Can be used as ODM for pier starts/finishes
2	Pink Spherical Buoy with flag	N52 13.133	W004 21.559	
3	Pink Spherical Buoy with flag	N52 13.311	W004 21.028	
Ina	Ina N Cardinal	N52 13.212	W004 20.736	CAUTION Reef to SE.
4	Pink Spherical Buoy with flag	N52 12.84	W004 20.56	CAUTION Reef to E.
5	Pink Spherical Buoy with flag	N52 12.840	W004 21.190	Caution - isolated rocks inshore/ towards Penpolion
RNLI	Large Flat Orange Mooring Buoy	N52 12.94	W004 21.04	Warps & pick-up buoy are not considered part of mark.
OOD Start Line	Blue Pillar or Hourglass Orange mark with black 'line' around	Various	Various	Temporary mark laid by OOD near a suitable race mark/committee boat for a beat start. Can use POD if per head start
OFFSHORE				
Northerly	Yellow Spherical Buoy (N)	N52 14.37	W004 22.08	
Bay	Large Yellow Spherical Buoy (B)	N52 14.52	W004 19.92	
Drywi	Pink Spherical Buoy (D)	N52 13.46	W004 19.12	
Cwmttydu	TBN	TBN	TBN	Normally placed by RIB on day of race
AYC	TBN	TBN	TBN	Normally placed by RIB on day nearer race
Causeway, Patches, Sarn-y-Bwch, Carreg-y-Trai, Cardigan Island	Various	Various	Various	Pass to seaward

Rydym yn croesawu gohebiaeth yn Gymraeg a Saesneg. Cewch ateb Cymraeg i bob gohebiaeth Gymraeg ac ateb Saesneg i bob gohebiaeth Saesneg. Ni fydd gohebu yn Gymraeg yn arwain at oedi.

We welcome correspondence in Welsh and English. Correspondence received in Welsh will be answered in Welsh and correspondence in English will be answered in English. Corresponding in Welsh will not involve any delay.

Prif Weithredwr / Chief Executive :
Cyfarwyddwyr Corfforaethol / Corporate Directors :

Eifion Evans
Barry Rees
James Starbuck



Cyngor Sir
CEREDIGION
County Council

Rhodri Llwyd
Swyddog Arweiniol Corfforaethol : Priffyrdd a Gwasanaethau Amgylcheddol
Corporate Lead Officer : Highways and Environmental Services

Canolfan Rheidol, Rhodfa Padarn,
Llanbadarn Fawr, Aberystwyth. SY23 3UE

Y SIARTIAU YR EFFEITHIR ARNYNT.
CHARTS EFFECTED.

1484 PLANS IN CARDIGAN BAY
1972 CARDIGAN BAY CENTRAL PART
1410 SAINT GEORGE'S CHANNEL

OWEN MORGAN AFNI
RHEOLWR YR HARBYRAU
HARBOUR MANAGER
HARBYRAU ABERYSTWYTH, ABERAERON A CHEI NEWYDD
ABERYSTWYTH, ABERAERON AND NEW QUAY HARBOURS

Rydym yn croesawu gohebiaeth yn Gymraeg a Saesneg. Cewch ateb Cymraeg i bob gohebiaeth Gymraeg ac ateb Saesneg i bob gohebiaeth Saesneg.
Ni fydd gohebu yn Gymraeg yn arwain at oedi.
We welcome correspondence in Welsh and English. Correspondence received in Welsh will be answered in Welsh and correspondence in English
will be answered in English. Corresponding in Welsh will not involve any delay.

Prif Weithredwr / Chief Executive :
Cyfarwyddwyr Corfforaethol / Corporate Directors :

Eifion Evans
Barry Rees
James Starbuck