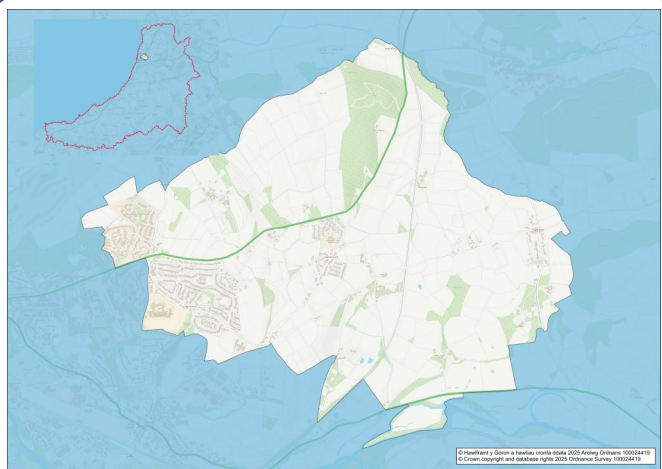


2021 Census Area Profiles – Electoral Wards

W05001307 - Faenor



Population:



3,462 residents



Females
1,800



Males
1,662

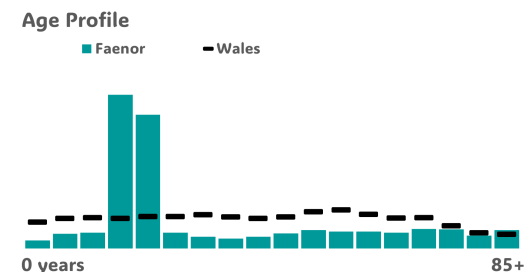
Population Change
(2011-2021)
+36.0%

1,855
Students

(people over 16 who are engaged in full-time courses of study in secondary, tertiary or higher education institutions)

7.7% aged 0 - 16
76.0% aged 16 - 64
16.3% aged 65+

8.3% BAME
90.9% White
0.8% Other Ethnic Group



Health & Disability:



22.2%

Disabled under the Equality Act



7.7%

Day-to-day activities limited a lot



83.1%

In good or very good health



6.8%

Provides unpaid care

Households:



744

Households



1.9%

Households without central heating



47.7%

Households deprived in one or more deprivation dimensions



0.9% Overcrowded Households

Welsh Language:



27.7%

Can speak Welsh

Age breakdown of Welsh speakers

0-15: 4.5%

16-64: 15.7%

65+: 7.3%



64.1%

Have NO skills in Welsh

Economy:



26.9%

Employment Rate



8.0%

Achieving level 2 qualification



67.0%

Economic Inactivity



5.3%

No Qualifications

Demography, Ethnicity, Identity & Religion:

| | Wards | | Ceredigion |
|--------------------------------------|-------|--------|------------|
| | No. | % | % |
| Population | | | |
| Population 2021 | 3,462 | - | 71,475 |
| Population 2011 | 2,545 | - | 75,922 |
| Population change (2011-21) | +917 | +36.0% | - 5.8% |
| Population density | 547.6 | - | 40.0 |
| Sex | | | |
| Males | 1,662 | 48.0% | 48.9% |
| Females | 1,800 | 52.0% | 51.1% |
| Age | | | |
| Aged 0 to 4 | 52 | 1.5% | 3.8% |
| Aged 5 to 19 | 1,202 | 34.7% | 16.1% |
| Aged 20 to 34 | 1,057 | 30.5% | 18.9% |
| Aged 35 to 49 | 242 | 7.0% | 14.2% |
| Aged 50 to 64 | 343 | 9.9% | 21.3% |
| Aged 65 to 74 | 231 | 6.7% | 13.9% |
| Aged 75 and over | 333 | 9.6% | 11.8% |
| Country of birth | | | |
| Born in UK | 3,001 | 86.7% | 92.9% |
| Born outside of UK | 461 | 13.3% | 7.1% |
| National Identity | | | |
| One or more UK identity | 3,065 | 88.5% | 93.4% |
| UK identity and non-UK identity | 101 | 2.9% | 1.7% |
| Non-UK identity | 296 | 8.5% | 4.9% |
| Religion | | | |
| Christian | 1,303 | 37.6% | 46.7% |
| No religion | 1,687 | 48.7% | 43.0% |
| All Other Religions | 121 | 3.5% | 2.6% |
| Veterans | | | |
| Previously served in UK armed forces | 70 | 2.2% | 4.1% |

Housing & Household Composition:

| | Wards | | Ceredigion |
|---|-------|-------|------------|
| | No | % | % |
| Tenure | | | |
| Owned | 535 | 71.9% | 68.6% |
| Private rented | 133 | 17.9% | 20.6% |
| Social rented | 72 | 9.7% | 10.5% |
| Shared ownership | 3 | 0.4% | 0.3% |
| Lives rent free | 1 | 0.1% | 0.0% |
| Accommodation Type | | | |
| Detached | 424 | 57.0% | 50.7% |
| Semi detached | 207 | 27.8% | 23.1% |
| Terraced | 67 | 9.0% | 14.1% |
| Flat, maisonette or apartment | 46 | 6.2% | 11.3% |
| Caravan or other mobile temporary | 0 | 0.0% | 0.8% |
| Household composition | | | |
| One person household | 214 | 28.8% | 33.0% |
| Single family household | 483 | 64.9% | 60.4% |
| Other household types | 47 | 6.3% | 6.6% |
| Central Heating | | | |
| No central heating | 14 | 1.9% | 2.6% |
| Occupancy Rating | | | |
| Overcrowded households | 7 | 0.9% | 1.4% |
| Number of bedrooms | | | |
| 1 bedroom | 17 | 2.3% | 7.4% |
| 2 bedrooms | 124 | 16.7% | 23.6% |
| 3 bedrooms | 359 | 48.3% | 42.5% |
| 4+ bedrooms | 243 | 32.7% | 26.5% |
| Number of cars or vans | | | |
| No car or van | 112 | 15.1% | 15.7% |
| Deprivation | | | |
| Households deprived in one or more deprivation dimensions | 355 | 47.7% | 52.9% |

Labour Market & Education:

| | Wards | | Ceredigion |
|---|-------|-------|------------|
| | No | % | % |
| Economic activity status | | | |
| Economically active (in employment) | 674 | 21.1% | 46.8% |
| Economically active (unemployed) | 19 | 0.6% | 1.8% |
| Economically inactive | 2,142 | 67.0% | 47.9% |
| <i>Retired</i> | 526 | 16.5% | 27.7% |
| <i>Student</i> | 1,502 | 47.0% | 10.0% |
| <i>Looking after home or family</i> | 29 | 0.9% | 3.5% |
| <i>Long-term sick or disabled</i> | 51 | 1.6% | 4.4% |
| Top 3 Industries | | | |
| Public administration, education and health | 374 | 10.8% | 14.8% |
| Distribution, hotels and restaurants | 196 | 5.7% | 9.2% |
| Other | 78 | 2.3% | 2.3% |
| Education | | | |
| No Qualifications (all aged 16+) | 169 | 5.3% | 14.7% |
| Qualifications Level 2 | 254 | 8.0% | 13.7% |
| Apprenticeship | 79 | 2.5% | 5.4% |
| Travel to Work | | | |
| Work mainly at/from home | 269 | 31.4% | 31.6% |
| Driving car/van | 394 | 45.9% | 51.1% |
| Bus | 7 | 0.8% | 1.3% |
| On foot | 103 | 12.0% | 10.0% |