

Aberteifi / Cardigan

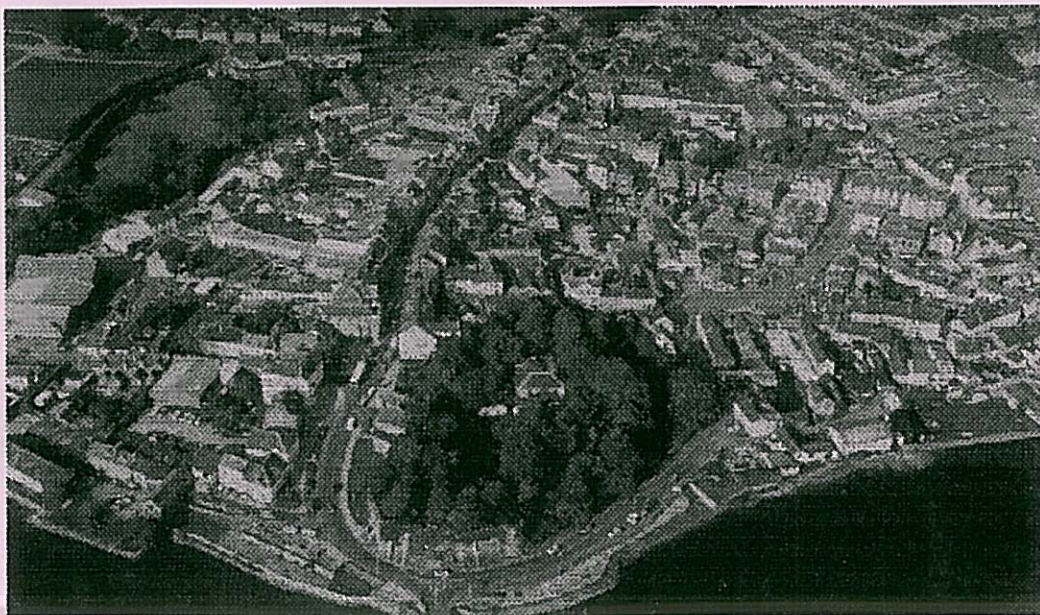
Hanes Aberteifi - Cardigan's Civic Society

In the spring of 1990 Cardigan Town Council was contacted by an organisation called CEI (the Centre for Environmental Interpretation) who had been funded to initiate a project which would focus on six towns in Wales that could benefit from Environmental Interpretation (making both tourists and locals more aware of their surroundings, their history and its value to modern society). Cardigan was one of the towns selected. A public meeting was held at which time a steering committee was formed for the project which by now was known as "Towns in View" and was soon to develop into Hanes Aberteifi. (Hanes translated from Welsh means : History/Story) **Hanes Aberteifi - The story of Cardigan.**

It was decided to form the group into a properly constituted civic society which would be affiliated to the Civic Trust for Wales. The establishment of this group took place at a grand launch at the Theatr Mwldan in November 1991, accompanied by a Theatrical Enactment near the river, a guided walk around the Town Trail, a Lecture with slides, a Heritage Roadshow and an Exhibition of the group's plans and work to date.

So much for the history lesson, but what is Hanes Aberteifi all about, I hear you ask!

Well, it's about Cardigan: its natural and built heritage, its culture, custom and tradition. Heritage does not just mean the preservation of 100 year old buildings, but also the planning and development of Cardigan into the new millennium. The by-pass and the supermarket will form part of our heritage in years to come and now is the time that we can ensure that the developments which occur are good for Cardigan and sympathetic to its environment. But we are not just interested in buildings but also the natural environment: and that means issues such as pollution, preservation of wildlife, the countryside, paths, the river etc.



Aerial view of Cardigan Town Centre

Culture and language issues are also important. The members come from a wide range of backgrounds both local and newcomers, Welsh and non-Welsh speaking. We aim to cut across social and cultural boundaries.

S14